



The Grapevine  
 February, 2015  
 Ware Episcopal Church  
 Gloucester, Virginia

**Ash Wednesday: Lent 2015 begins**



Ash Wednesday is February 18<sup>th</sup> this year. Plan to begin your Lenten discipline by attending one of two services on this day. We will gather in the Chapel of the Christ Child at 12 Noon and in the Church at 7:00 p.m. This service will be a celebration of the Holy Eucharist and will include Imposition of Ashes. For more information, contact the Church office.

**Holy Day Services in February**



Throughout the year, the Church commemorates significant events in Jesus life as well as the lives of those closely associated with Jesus and the Apostles. We will commemorate these events and Saints with a celebration of the Holy Eucharist in the Chapel of the Christ Child at 10:00 a.m. In February, we commemorate on

- Monday, February 2 The Presentation of our Lord Jesus Christ in the Temple
- Tuesday, February 24 The Feast of St. Matthias the Apostle



## Notes on the Sunday Liturgies in Lent

During the season of Lent we will continue to use The Holy Eucharist: Rite II at the 8:30 a.m. service. At the 10:30 a.m. service, we will use The Holy Eucharist: Rite I. Both services will begin with a Penitential Order. This order places the Confession of Sin and Absolution at the beginning of the service to remind us from the beginning that we are sinners who have been redeemed by God through Jesus Christ. Also, as a part of the Penitential Order we will incorporate The Exhortation, the Great Litany, and The Decalogue during Lent. The following lists the Sunday's when these will be used.

2/22	1 Lent: <i>An Exhortation</i>	3/1	2 Lent: <i>The Decalogue</i>
3/8	3 Lent: <i>The Great Litany</i>	3/15	4 Lent: <i>The Decalogue</i>
3/22	5 Lent: <i>The Decalogue</i>		

## Opportunities for Daily Worship during Lent

During Lent, there will be opportunities for daily worship in the Chapel with opportunities to pray the Daily Office and weekly celebrations of the Holy Eucharist. The weekly schedule is as follows:

Mondays (Noonday Prayer)	12:15 p.m.
Tuesday (Morning Prayer)	8:30 a.m.
Wednesdays (The Holy Eucharist)	10:00 a.m., 6:00 p.m.
Thursday (Evening Prayer)	5:30 p.m.
Friday (Compline)	A take-home resource
Saturday (Daily Devotions)	A take-home resource

## Sunday Morning Adult Forum during Lent – “Voices in Lent”

This five-part series will focus on the lives of men and women recognized by the Church as saints. Drawing from the history of each person, his or her own writings, and the scriptures appointed for each feast day, we will glimpse the holiness of each's life and hopefully be influenced by each. Each session will meet in the Parish Hall at 9:30 a.m. and conclude by 10:15. The schedule of saints explored follows:

2/22	George Herbert, Priest, 1633
3/1	Perpetua and her companions, Martyrs, 202 A.D.
3/8	Gregory the Great, Bishop of Rome, 694 A.D.
3/15	Thomas Cranmer, Archbishop of Canterbury, 1556
3/22	Richard Allen, 1 <sup>st</sup> Bishop of the AME Church, 1831

## Palm Sunday Forum – The Triduum: Three Days, One Service

This Sunday's forum will focus exclusively on the period from Maundy Thursday to daybreak Sunday known collectively as the Triduum. The events during this time – the Last Supper, the Passion/Crucifixion, burial, Resurrection -- are at the core of our Faith. This one-part forum will focus on the unique nature of this period and chronicle the development of each of the parts of this one service and give a new depth of meaning to our worship during Holy Week. We will meet in the Parish Hall at 9:30 a.m. and conclude by 10:15 a.m.

<i>In this issue</i>	<i>Page</i>
<i>Adult Forum</i>	<i>2</i>
<i>Annual Council Forum</i>	<i>5</i>
<i>Ash Wednesday</i>	<i>1</i>
<i>Birthdays</i>	<i>12</i>
<i>Calendar</i>	<i>13</i>
<i>Calling All 20s &amp; 30s</i>	<i>9</i>
<i>Christian Education</i>	<i>7-9</i>
<i>Coffee Hour</i>	<i>12</i>
<i>Lenten Daily Worship</i>	<i>2</i>
<i>G-M Dental Clinic Raffle</i>	<i>12</i>
<i>Grapevine Deadline</i>	<i>3</i>
<i>Holy Day Services</i>	<i>1</i>
<i>Laity Schedule</i>	<i>14</i>
<i>Lenten Sunday Liturgies</i>	<i>2</i>
<i>Lenten Suppers &amp; Programs</i>	<i>5</i>
<i>Music Notes</i>	<i>6</i>
<i>Office Closure</i>	<i>3</i>
<i>Palm Sunday Forum</i>	<i>2</i>
<i>Parish Leadership</i>	<i>3</i>
<i>Parish Register</i>	<i>3</i>
<i>Prayer Group</i>	<i>6</i>
<i>Rector</i>	<i>4</i>
<i>St. Tabitha's Gio;d</i>	<i>10</i>
<i>Shrinemont</i>	<i>11</i>
<i>Shrove Tuesday Pancakes</i>	<i>5</i>
<i>Stewardship</i>	<i>11</i>
<i>Vestry</i>	<i>11</i>
<i>Volunteer</i>	<i>6</i>
<i>Women of Ware</i>	<i>9</i>
<i>March Deadline</i>	
<i>Sunday, February 15</i>	
<i>Office Hours</i>	
<i>9 a.m.-1 p.m.</i>	
<i>Monday – Friday</i>	
<i>Closed</i>	
<i>Monday, February 16</i>	
<i>For</i>	
<i>President's Day</i>	

## Clergy and the 2015 Vestry

The Rev'd T. Grant Ambrose, Rector

To be elected by Vestry, Senior Warden  
Henry W. Moncure, Junior Warden  
James D. Kilduff, Register  
Edward H. James, Treasurer

F. Lee Brown, Jr. ✧ Joseph S. Brown, III  
Paul W. Crook ✧ Anne C. Dyal  
Stephanie W. Hanson ✧ Scott O. Kalbrener  
Kenneth B. Richardson ✧ D. P. Roane, Jr.  
Jane H. Smith ✧ Rachel K. Teagle

Honorary Members of the Vestry  
Alexander B. Atkins, Sr. ✧ Hugh C. Dischinger  
C. Flippo Hicks ✧ Donald P. Roane

Telephone: 804.693.3821

E-mail: [warechurch@cox.net](mailto:warechurch@cox.net)

Web Page [www.warechurch.org](http://www.warechurch.org)

7825 John Clayton Memorial Highway  
Gloucester, Virginia 23061  
Mailing Address: Post Office Box 616  
Gloucester, VA 23061-0616

## The Staff

The Rev'd T. Grant Ambrose  
Rebecca F. Morris  
Delores M. Johnston  
Elizabeth D. Richardson  
Vincent Pryor

Rector  
Parish Administrator  
Music  
Christian Education  
Sexton

[rector@warechurch.org](mailto:rector@warechurch.org)  
[office@warechurch.org](mailto:office@warechurch.org)  
[music@warechurch.org](mailto:music@warechurch.org)  
[Sundayschool@warechurch.org](mailto:Sundayschool@warechurch.org)

## Parish Register

Ralph Edwin Williams (Ted)  
January 1, 2015

## ***Lent: A Great Gift of Renewal***

*Thereby, the whole congregation was put in mind [. . .] of the need for all Christians continually have to renew their repentance and faith.*

– from the liturgy of Ash Wednesday, The Book of Common Prayer (264)



One aspect of Church leadership that bewilders me is the writing of the monthly newsletter article. Now I'm not referring to content or the process of writing (I truly enjoy both of these). What bewilders me is having to focus so intently on the future in such an intently present present (that's not a typo). Here's what I mean. As I begin writing this article, we have just celebrated the Baptism of our Lord on the second Sunday in January. The Season after the Epiphany is just beginning; yet, I'm writing an article for the newsletter that will usher in the great Season of Lent and be the forerunner of the events surrounding our celebration of the Easter Mystery. Here I am living in the midst of Epiphany but already my mind is having to deal with Lent and Easter. As befuddling as this may be, it is a great gift in all truth if for no other reason than it reminds me that with Jesus Christ in the present and well aware of the hope of the future that rests in him.

I began this month's letter by quoting from the Ash Wednesday Liturgy. The phrase "continually have to renew their repentance and faith" caught my attention this year. The word "continually" is what initially caught my eye. In a culture that places a value on "marking things off the list" the notion of doing something "continually" is becoming more and more foreign. Lent reminds us that there are some things in life that we cannot mark off the list but must continually address: our repentance and faith being two of the most significant that require our continual attention.

There is a growing trend that seeks to refocus the intention of a Holy Lent on something besides Lent's penitential nature. However, we need to preserve and live into the intended nature of Lent: the importance of continual evaluation of who we are and how we are or are not living out our Baptismal Covenant. This evaluation does not mean that we break out the hair shirts and the whips, but it does mean that we take seriously our reflection on how our lives reflect the tenets of our faith and represent the life of Jesus Christ. Ways that we accomplish this is "by self-examination and repentance; by prayer, fasting, and self-denial; and by reading and meditating on God's holy Word" (BCP 265).

These ways need to be grounded in a community of faith, the Body of Christ, the Church. To help you in your continual renewal there will be ample opportunities at the Church Lent from daily worship opportunities to a weekly Lenten Program and a one-day Lenten retreat. (You will find more information about these throughout this edition of the *Grapevine* and next month's).

One of the great gifts of our faith is the gift to continually renew who we are as we grow closer to God through Christ. Take advantage of this gift and give thanks for God's amazing love.

In Christ's Peace,

Grant+

## 2015 Lenten Program

# “L.E.N.T.: Listen, Engage, Nurture, Tell”

This five-part series will explore four key tools to strengthen our faith and thereby be better equipped to live our lives as heralds of the Good News of Jesus Christ and live into our Baptismal Covenant. This program will draw from Holy Scripture, The Book of Common Prayer, The Hymnal 1982, and Church History. Additionally, this program will provide a framework for our Lenten Preparation as we prepare ourselves to recall to mind the great sacrifice of the Cross and the glory of Easter Morning.

**When:** We will meet on Thursday evenings during Lent.

February 26	March 5
March 12	March 19
March 26	

**Time:** 6:00 p.m. – Simple Supper begins; 6:30 p.m. -- Program

**Place:** Ware Episcopal Church Parish Hall

A simple supper will be served prior to each session. Donations to offset costs are welcome.

### Shrove Tuesday Pancake Supper

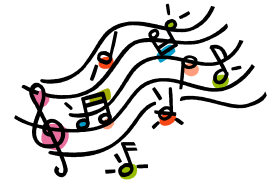


*The Shrove Tuesday Pancake Supper* will be February 17<sup>th</sup>, 6:00 – 7:00 p.m. Come and enjoy a dinner of pancakes, sausages, maple syrup, cooked apples, fresh fruit and yogurt. Cost will be \$8.00 Adults, \$5.00 Children and \$25.00 for a whole family. Proceeds will benefit Boy Scout Troop 111. Ware Church is a sponsor of Troop 111 and this is our major fund raiser for them. Please tell your friends and come.

### Special Forum on the 220<sup>th</sup> Annual Council of the Diocese of Virginia

Join the Rector and Ann Brown, Delegate, for a discussion on this year’s Annual Council. Here about the state of the Diocese, from our Bishops, and plans for the future. This session will be held on Sunday, February 8, during the Adult Forum held in the Parish Hall. The session will begin at 9:30 a.m. and conclude by 10:15 a.m.

## Music Notes



### Eastman Scholarship

There is a special scholarship fund in memory of Reginald Eastman, past rector of Ware Church, that is available to students who are members of Ware Church. This scholarship will be awarded on May 31, at our annual awards ceremony. Applicants must be full-time students and active members of Ware Church. The amount of up to \$2,000 annually will be available. Applicants must apply by completing an application form, which may be obtained from the church office, and submitting an essay listing the reasons for applying for the scholarship. This scholarship money is intended to help defray the cost of music and educational pursuits such as music lessons, camp tuition, private tutoring, instrument purchase, etc. All applications and accompanying essays must be received in the church office by no later than April 15. It should be noted that more than one scholarship may be awarded each year, with the \$2,000 being split among the winning applicants. It is intended that this scholarship award will be an annual event, with applicants applying every Spring. All applications will be reviewed and scholarship awards will be decided by the Scholarship Committee. Committee members are Elizabeth Grubbs, chairperson, Stephanie Hanson, Breck Montague, Mike Jenkins and Dee Johnston.

### Summer Music Camp

Mark your calendars now for this year's Summer Music Camp, which will run July 13 – 17 from 1:00 5:00 each day. Minimum age for campers is 5 years old.

### Music Schedules

**Junior Choir – Wednesdays, Feb. 4, 11, 18 and 25 – 5:00-6:00**

**Junior Handbells – Wednesdays, Feb. 4, 11, 18 and 25 – 6:00 – 6:45**

**Senior Choir – Sunday mornings – Feb. 1, 8, 15 and 22 – 8:30**

**Senior Handbells – Sundays at Noon, Feb. 1, 8, 15 and 22**

## Meetings This Month

Vestry  
Monday  
February 2<sup>nd</sup>  
7:00 p.m.  
Library

Healing Service and Prayer Group  
Wednesday  
February 11<sup>th</sup>  
10:00 a.m.  
Chapel of the Christ Child



## Christian Education



Christian Education classes (K-12) are held during the 10:30 a.m. service. The church provides Children's Bibles, but students are encouraged to bring their own from home. An Adult Forum is held at 9:30 a.m. on the second floor of the Parish Hall. Refreshments are served.

### February 1: Focus Scripture Mark 1:21-28

Read the scripture and answer the following:

What two things does Jesus do here that astounded and amazed the witnesses?

1. \_\_\_\_\_
2. \_\_\_\_\_

What begins to happen as a result?

### Today's lesson: "TAMING THE DRAGONS"

In this reading, the "unclean spirit" is a more serious illness than a "dragon moment." This man needed special help to heal and be well in his mind. Jesus chose to heal him. How did the "unclean spirit" seem to feel about that? How do you think the man's life might have been changed after this event? When we see someone who is upset or hurting (having a "dragon moment") what can we learn by Jesus' example? When we know someone needs extra help, what should we pray for on their behalf?



### Activity

List some of the things that bring out the "dragon" in you. What might you miss out on when you're feeling this way? How does it affect you and those around you? What can you try to do when "dragon moments" drag you down?

### For Fun

Watch the movie, How to Train Your Dragon, by Dreamworks. In the movie, the real dragons turn out to be much nicer and more helpful than anyone ever guessed. It took a young boy, reaching out with compassion, to learn that they could be friends. the humans joined together. What would be a good "lesson learned" for this story?

### February 8 – YOUTH SUNDAY: Focus Scripture: Mark 1:29-39 - Dance for the Heart

Read the scripture and answer the following questions:

What does Jesus do for Simon's mother-in-law? \_\_\_\_\_

What does he do for the others? \_\_\_\_\_

What does Jesus do in the morning? \_\_\_\_\_

Why do you think he takes time to do this when everyone is looking for him?

**Today's lesson: A Healing Hand from Jesus: Caring Prayers from Us**

*Make up a story for this photo on the left:*

What is happening? Who needs healing and why? How could you lend a hand if you were there? How can you show support from wherever you are? When we do any of these things in Jesus' name, we also share in the healing of the world.



### **February 15: Focus Scripture: Mark 9:2-9**

*Read the scripture and answer the following:*

God's people were together. What do you make of that? Do you think such moments occur to us also when we are alone? Look at the pictures on this website: <http://diglib.library.vanderbilt.edu/act-processquery.pl?code=ACT&SortOrder=Title&LectionaryLink=BTtran>. Now take a piece of paper and draw your own picture of the transfiguration.

### **Today's lesson: A traditional English Pancake Day**

Pancake Day became a great way to use the foods that were given up for Lent: milk, butter, and eggs. Pancakes have featured in recipe books as far back as 1439! Pancake Races -Pancake races are held all over England. The object of the race is to get to the finishing line first whilst flipping a pancake in a frying pan a pre-decided number of times. The skill lies not so much in the running of the race but in flipping and catching the pancake, which must be intact when the finishing line is reached. The most famous pancake race takes place at Olney. According to tradition, in 1445 a woman of Olney heard the shriving bell while she was making pancakes and ran to the church in her apron, still clutching her frying pan. The Olney pancake race is now world famous. Competitors have to be local housewives and they must wear an apron and a hat or scarf. Each contestant has a frying pan containing a hot, cooking pancake. She must toss it three times during the race that starts at the market square at 11.55 am. The first woman to complete the winding 375-metre course (the record is 63 seconds set in 1967) and arrive at the church, serve her pancake to the bell ringer, and be kissed by him, is the winner. She also receives a prayer book from the vicar.

### **Pancake Recipe:**

Ingredients: *8 oz plain flour, sifted; pinch of salt; 2 eggs; 1 pint of milk; 2 butter.* Makes about 8 pancakes; Sift the flour and salt into a large mixing bowl with a sieve held high above the bowl so the flour gets a airing; Make a well in the centre of the flour and break the eggs into it; Whisk the eggs making sure any bits of flour from around the edge of the bowl are mixed in with the egg; Gradually add small quantities of the milk, still whisking; Continue whisking until the batter is smooth, with the consistency of thin cream; Melt the 2 lbs. of butter in a non-stick frying pan; Spoon 2 tbsp. of the melted butter into the batter and whisk it in; Let the pancake mix stand for at least 30 minutes before cooking; Pour any leftover butter into a dish. This will be used later to grease the frying pan after each pancake has been made; Make sure the non-stick frying pan is really hot before adding about 2 tbsp. of the batter mixture; As soon as the batter hits the hot pan, tip the pan around from side to side to get the base evenly coated with batter; Carefully lift the edge of the cooked pancake with a palette knife to see if it's tinged gold as it should be; Flip the pancake over with a pan slice or palette knife to cook the other



side; Slide it out of the pan onto a plate; Stack the pancakes as you make them between sheets of greaseproof paper on a plate. *DID YOU KNOW? In England, the first pancake made was given to the chickens, to ensure their fertility during the year.*

### **February 22: Focus Scripture: Mark 1:9-15**

In those days Jesus came from Nazareth of Galilee and was baptized by John in the Jordan. And just as he was coming up out of the water, he saw the heavens torn apart and the Spirit descending like a dove on him. And a voice came from heaven, "You are my Son, the Beloved; with you I am well pleased."

And the Spirit immediately drove him out into the wilderness. He was in the wilderness forty days, tempted by Satan; and he was with the wild beasts; and the angels waited on him.

Now after John was arrested, Jesus came to Galilee, proclaiming the good news of God, and saying, "The time is fulfilled, and the kingdom of God has come near; repent, and believe in the good news."

### **The Youth Curriculum**

The Episcopal Curriculum for Youth uses a cumulative framework of twelve modules to be used over a period of years.

Designed for Younger Youth who may be in Middle School or Junior High, three of the modules focus on Old Testament (Hebrew Scriptures), three on the New Testament, and three on Contemporary Times.

Within each stream are the archetypes of Call, Covenant, and Community.

In addition three modules are on the basics of *Sacraments, The Episcopal Church Year, and Spiritual Life.*

## **Calling all those in their 20s or 30s (or those claiming so to be 😊)**

Want to help organize a new ministry at the Church? Do you enjoy good fellowship? Want to help those in need? Want to strengthen your Spiritual life? Then come on board and help put together the 20s and 30s ministry at Ware Church. This ministry will focus on providing regular opportunities for those of us called "Young Adults" to gather together for fun and fellowship, outreach opportunities, and spiritual conversation. If you would like to help get this ministry started, please contact the office and let Grant know of your interest: [rector@warechurch.org](mailto:rector@warechurch.org); (804) 639-3821.

## **Women of Ware**

All ladies are invited to join us at our meeting on Monday, February 23 at 10:00 a.m. in the Parish Hall. Teta Cain will present a program about the Dismal Swamp. Lenore Munger is the hostess.



## ***St. Tabitha's Guild***

As we get St. Tabitha's Guild going, you may say, "I do not knit or crochet or sew. This group is not for me." However, as a ministry of the church we need each and every one of you to be apart of this outreach. We each have our own gifts to share with each other. For some, that will be in making the different items and having a highly active role within St. Tabitha's Guild. For the rest of the congregation, your role is one behind the scenes, but it is just as vital. Below you will find a list of ways you can support St. Tabitha's Guild and our desire to share comfort with people in need.



**1.) Keep us in your prayers!** Pray for our hands as we use them to make prayer shawls to comfort people in difficult times, hat/scarves for people who are homeless, chemo hats for people battling cancer, and other items to reach out to people in need of God's loves.

As you pray for us, **pray for the people who receive the items**, that they may recognize "they are loved and they are not alone".

**2.) Make a donation!** If you find unused yarn or material taking up space in your home, please bring them to us and we will put them to good use. There will be a box/plastic tub for yarn and material donations in the Parish Hall. If you're unsure of what we may want, consider giving a gift card to Michael's or JoAnn Fabrics. They are another great way to make a donation to St. Tabitha's Guild.

**3.) Give names to the Rector!** If you know someone who may benefit from receiving a handmade gift, please let Grant know. We will make and keep a supply of gifts for Grant to pass along when he goes for a visit.

**4.) Join us!** ☺ We are willing to teach anyone and everyone who wants to learn how to crochet, knit, sew, cross-stitch, and more! We will have at least two meetings each month, one during the day and one during the evening. There will also be a Sunday morning gathering on a quarterly basis. As we get schedules accustomed to a new event, we will look at having a third gathering during the month of February.

### **February Meeting Times:**

**2<sup>nd</sup> Thursday, February 12<sup>th</sup>, at 11:00 a.m.**

**3<sup>rd</sup> Tuesday, February 17<sup>th</sup>, at 7:30 p.m.**

**4<sup>th</sup> Thursday, February 26<sup>th</sup>, at 7:30 p.m.**

Meetings are in the Library.

## 10 MINUTES FOR STEWARDSHIP



There is a great misconception that stewardship is a once-a-year phenomenon. This misconception leads to a skewed understanding of what the discipline of stewardship actually is. Stewardship is not fundraising. Stewardship is not charitable giving. Stewardship is not dropping a few dollars in the plate as a last minute thought. Stewardship is rightly responding in thanksgiving for all we have received from God.

Writing for the TENS Network (The Episcopal Network of Stewardship) J.R. Landers notes:

**“Stewardship begins not with the mission of the church, nor the needs of its institution, but rather with God’s abundance and our response to it.”**

What is key here is the notion of “beginnings”. Both the mission of the church and the needs of the congregation benefit from stewardship, and it is by our stewardship that these are funded. However, these considerations are not where stewardship begins. Stewardship begins with our realization of the abundance that we have and then giving thanks by responding accordingly: mindfully giving of our treasure, talents, and time.

Take time this month to read the following passage: First Chronicles 29:10-19.

You may wish to consider these questions after you have read the passage?

- 1) What does it mean to give thanks to God and praise God’s glorious name?
- 2) What does abundance mean to you?
- 3) How do you give abundantly back to God?

## ***Shrine Mont Summer Camps***



Shrine Mont in the Shenandoah Valley is a place where people are important. Prayer, rest and reflection are more important than your to-do list. The beauty of the camp area with its streams, flowers and wildlife reminds us of God’s creation and makes us realize what He has given us and to be thankful for it. We are a part of His family.

The summer program is a ministry of the Episcopal Diocese of Virginia and currently offers nine camps including one for families. Shrine Mont is located on 1,000 acres of forest and offers plenty of space for outdoor activities. There are also retreat houses, three campsites, complete with cabins, modern bath facilities, camp fire rings and art studios. There are two dining halls and a swimming pool. Registered nurses are on site and chaplains work with each camp to address spiritual needs of the camp.

Brochures are available at the entrance to the Parish Hall and in the church office with all the information about the summer camps this year. Ages included are 8 - seniors in high school as well as the family camp. Scholarships are available through the Diocese and through Ware Church.

## February Birthdays

If you wish for your birthday to appear in the monthly list, please call the Church Office.



1 - Doug Dwoyer	13 - John Kimberly	22 - Kathryn Dykeman
4 - Joyce Blymyer	14 - Ed Hudgins	22 - Peter Worthington
4 - Alexandra Richardson	15 - Jacob Ward	23 - Erin Jenkins
4 - Lindsay Smith	16 - Justin Leigh	23 - Shelby Jenkins
5 - Sarah Ingles	17 - John Haracivet	23 - Doug Wilt
5 - Nell Jones	17 - Nancy Wilson	24 - Carolyn Hicks
5 - Jim Leigh	18 - Joanne Bartlett	26 - Carey Beverly
6 - Sean Frye	19 - Robert Teagle	27 - William Mitchell, III
7 - Betty White	20 - Katie O'Neil	28 - Jeannie Teagle
8 - Charles Johnston	20 - Rip Radcliffe	
8 - Kim Roj	20 - Hank South	
10 - Robert Zullo	20 - Holly Zuger	
11 - Chris Denton	21 - Jessica Frye	
12 - Donna DeShazo	21 - Mary Lawrence	
12 - Mimi Ulsaker	21 - Kate Zullo	

To have your birthday listed, call the Office.



## Coffee Hour Help Needed

Coffee Hour is a time after the 10:30 service that gives us all an opportunity to converse with other Ware parishioners and to welcome visitors to the parish. Sign up to host a Coffee Hour. The sign-up sheet is at the stairway entrance to the Parish Hall. You provide cookies. The lemonade and coffee are in the kitchen. One or two people are needed each week.



## WoW Dental Clinic Raffle



Volunteers from WOW will have raffle tickets available in January to mid-February for family, friends, and parishioners. There will be a Wine and Cheese drawing Sunday, February 15, 3 p.m. – 5 p.m., hosted by the women. You do not have to be present to win.

Prizes include a week at Wintergreen, a framed John Barber sailing print, a gourmet dinner for 8, and a dessert-a-month for a year. Tickets are \$10 each or 3 for \$25. Thank you for your support.

# February Calendar



Sunday	Monday	Tuesday	Wednesday	Thursday	Friday	Saturday
<b>1 4 Epiphany</b>  <u>Regular Sunday Schedule*</u>	<b>2</b> <u>10:00 am-HE</u> <b>Presentation of Jesus at the Temple</b> <u>7:00 pm</u> <b>Vestry, L</b> <u>8:00 pm-PH</u> <b>AA Women</b>	<b>3</b>	<b>4</b>  <u>5:00 pm</u> <b>Junior Choir</b> <u>6:00 pm</u> <b>Junior Handbells</b>	<b>5</b>  <u>12:30 pm</u> <b>Rotary Club PH</b>	<b>6</b>	<b>7</b>
<b>8 5 Epiphany</b>  <u>Regular Sunday Schedule*</u>	<b>9</b>  <u>8:00 pm</u> <b>AA Women PH</b>	<b>10</b>	<b>11</b> <u>10:00 am</u> <b>Healing Service &amp; Prayer Group</b> <u>5:00 pm</u> <b>Junior Choir</b> <u>6:00 pm</u> <b>Jr. Handbells</b>	<b>12</b> <u>11:00 am</u> <b>St. Tabitha's Guild, L</b> <u>12:30 pm</u> <b>Rotary Club PH</b>	<b>13</b>	<b>14</b>
<b>15 6 Epiphany</b> <u>Regular Sunday Schedule*</u> <u>3:00 pm</u> <b>WoW Wine &amp; Cheese + G-M</b> <b>Dental Clinic Raffle, PH</b>	<b>16</b> <u>8:00 pm</u> <b>AA Women PH</b> <b>Office Closed</b>	<b>17</b> <u>6:00 pm</u> <b>Shrove Tuesday Pancake Supper</b> <u>7:30 pm</u> <b>St. Tabitha's Guild, L</b>	<b>18</b> <u>Noon, Chapel</u> <u>7:00 pm, Church</u> <b>Ash Wednesday Services</b> <u>5:00 pm</u> <b>Junior Choir</b> <u>6:00 pm</u> <b>Jr. Handbells</b>	<b>19</b>  <u>12:30 pm</u> <b>Rotary Club PH</b>	<b>20</b>	<b>21</b>
<b>22 1 Sunday of Lent</b> <u>Regular Sunday Schedule*</u>	<b>23</b> <u>10:00 am</u> <b>Women of Ware, PH</b> <u>8:00 pm</u> <b>AA Women PH</b>	<b>24</b> <u>8:30 am-HE</u> <b>Feast of St. Matthias the Apostle</b>	<b>25</b> <u>Noon, 6:00 pm</u> <u>Chapel</u> <b>Lent HE</b> <u>5:00 pm</u> <b>Junior Choir</b> <u>6:00 pm</u> <b>Jr. Handbells</b>	<b>26</b> <u>12:30 pm</u> <b>Rotary Club, PH</b> <u>5:30 pm</u> <b>Evening Prayer</b> <u>6:00 pm</u> <b>Lenten Supper &amp; Program</b> <u>7:30 pm</u> <b>St. Tabitha's Guild, L</b>	<b>27</b>	<b>28</b>

**\*Regular Sunday Schedule for February**

8:30 am	Holy Eucharist	10:30 am	Holy Eucharist/Sunday School
8:30 am	Senior Choir	Noon	Senior Handbells
9:30 am	Adult Forum	7:00 pm	AA

# February Laity



Date	Feb. 1	Feb. 8	Feb. 15	Feb. 18	Feb. 22
<b>Acolyte</b>	Blair South Emma James Rauri Kilduff	Jack & Sarah Teagle Luke James	Tabytha & Abygail Clayton Eamon Griffin	Ash Wednesday Service	Alex Richardson Meg & Andrew Teagle
<b>Chalicer</b>	Craig Monsen Tom Hay	Peter Teagle	Ann Brown	Tom Hay	Peg Moncure
<b>Chancel Guild</b>	J. 30 – F. 5 T#4 Donna DeShazo	Feb. 6 - 12 T#5 Bobby Ray	Feb. 13 - 19 T#6 Margi Teagle		Feb. 20 – 26 T#7 Mary Ann Griffith
<b>Coffee Hour</b>	Margi Teagle Bobby Ray				Meredith Roane
<b>Counter</b>	Jane Smith  Woody James	Rachel Teagle  Debby Wiggins	Lee Brown  Jacque Kilduff		Joe Brown  Tom Hay
<b>Greeter</b>	Nancy Dwoyer	Sue & Rick Zima	Catesby Jones		Diana & Paul Joyce
<b>Reader</b>	Jane Smith	Blair South	Bruce Forsberg		Diana Joyce
<b>Usher</b>	<u>8:30</u> John Kimberly  <u>10:30</u> Peter Teagley Lloyd Ward	<u>8:30</u> Wayne Jackson  <u>10:30</u> Kenny & Debby Wiggins	<u>8:30</u> Sara Delo  <u>10:30</u> Bill Whitley Pete Roane	<u>7:00</u> Ed James Chuck Crook	<u>8:30</u> Richard Clayton  <u>10:30</u> Catesby Jones Shot Tabb
<b>Vestry On Duty</b>	Jane Smith	Rachel Teagle	Lee Brown		Joe Brown

*Please arrange for your own substitute.*